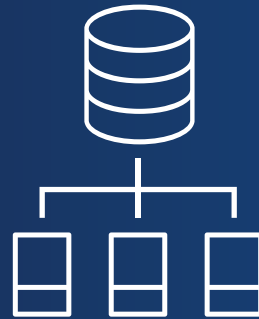


# STRICKER

## webservice v2.11



**GET  
INFO**

**1**

**ACCESS YOUR  
INFORMATION**

FORMATS  
LANGUAGES  
REQUESTS

**2**

**GET YOUR  
PRICE**

**3**

**GET YOUR  
PRINTING PRICE**

**GET  
IMAGES**

**4**

**ACCESS IMAGES**

**ACTIONS**

**5**

**AUTHENTICATION**

**6**

**ERROR  
MANAGEMENT**

ORDERS

7

PRODUCT  
ORDER



ORDER  
PRODUCTS

8

PRODUCT  
ORDER  
WITH PRINT



ORDER PRODUCTS  
WITH PRINT



CAN ALSO ORDER  
PRODUCTS  
WITHOUT PRINT

9

PRODUCT  
ORDER  
WITH PRINT  
(ARTWORK LATER)



ORDER PRODUCTS  
WITH PRINT



SEND ARTWORK  
LATER



CAN ALSO ORDER  
PRODUCTS  
WITHOUT PRINT

10

ORDER  
LIST

11

ORDER  
DETAILS

12

CANCEL  
ORDER

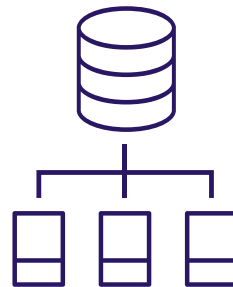
OTHER  
OPERATIONS

## Request web service access

To request access to Paul Stricker data through Webservice, you should send an email to your sales manager and explain your necessity.

Then you will receive a document provided by Stricker, containing our Privacy Policy and Terms and Conditions to use our data and our webservice. Please, read and confirm the agreement. Your password will be generated and delivered just after the agreement done.

You will receive the password and the manual / documentation to implement the Webservice.



\*\* Please note: in case of lost password, inform immediately your sales manager to provide you a new one. The lost password will be inactivated and replaced by the new one. Remind to change it in all necessary connections.

## 1

# HOW TO ACCESS YOUR INFORMATION (part 1)

## ACCEPTED PROTOCOLS

(Development necessary for use)

SOAP

REST

Need authentication for use

## INFORMATION FORMATS

JSON

XML

CSV

## NUMBER OF DAILY REQUESTS

Authentication / orders

unlimited

Stocks

48

All other methods

1 per  
language

# 1 HOW TO ACCESS YOUR INFORMATION (part 2)

## ACCEPTED LANGUAGES

Language	Code to be used as a parameter
Czech	CZ
Dutch	NL
English	EN
French	FR
German	DE
Italian	IT
Polish	PL
Portuguese	PT
Russian	RU
Spanish	ES
Slovak	SK

Language	Code to be used as a parameter
Bulgarian	BG
Croatian	HR
Danish	DK
Finnish	FI
Greek	GR
Hungarian	HU
Norwegian	NO
Romanian	RO
Serbian	RS
Swedish	SE
Ukrainian	UA

## 1.1 SOAP (part 1)

When accessing the web service using SOAP protocol the data format is always xml. It can be necessary to raise the timeout period because of the size of the transmitted information.

Service	Address
Service address	<a href="http://ws.stricker-europe.com/strickerservice.svc">http://ws.stricker-europe.com/strickerservice.svc</a>
Service WSDL address	<a href="http://ws.stricker-europe.com/strickerservice.svc?WSDL">http://ws.stricker-europe.com/strickerservice.svc?WSDL</a>
Single WSDL	<a href="http://ws.stricker-europe.com/strickerservice.svc?SINGLEWSDL">http://ws.stricker-europe.com/strickerservice.svc?SINGLEWSDL</a>

## 1.1 SOAP (part 2)

### Methods

- 4.1. AuthenticateClient** – Used to authenticate client (session token).
- 4.2. ValidateSession** – Used to check if previously established session is still active.
- 4.3. ProductsTree** – List of full product tree (reference, SKUs, prices, customization options...).
- 4.4. Products** – List of product properties by main reference (reference, name, description).
- 4.5. Optionals** – List of product optionals properties (SKU, reference, color, size, capacity, price).
- 4.6. OptionalsComplete** – List of product optionals properties combined with product properties (reference, SKU, name, description, color, size, capacity, price).
- 4.7. CustomizationOptions** – List of product customization possibilities (reference, component, location, area, customization type, price).
- 4.8. CustomizationTables** – List the customization tables/techniques prices.
- 4.9. Stocks** – List of product stock and future stock entries (SKU, stock).
- 4.10. Colors** - List of color codes and names.
- 4.11. OptionalsPrice** – List with with options for each product
- 4.12. ProductTypes** – List of product types (description, sub-types)
- 4.13. OrderList** – List of orders
- 4.14. CountryStocks** – List of product stock and future stock entries by country (PT or CZ)
- 4.15. CloseSession** – Close session.



## 1.2 REST (part 1)

When accessing the web service using REST protocol, the response data format will be JSON by default. The desired format can be selected by changing the request header according to following table:

Data type	Header	Value
XML	Accept	application/json
JSON	Accept	application/xml

### Web service resource parameter

Parameter name	
your_accesskey	Please refer to section 2.
session_token	Please refer to section 6.
language	Please refer to section 1.

### Product xml and json example

XML	JSON
<pre>&lt;Products&gt;   &lt;Product&gt;     &lt;ProdReference&gt;30101&lt;/ProdReference&gt;     &lt;Name&gt;LUANDA Men's t-shirt&lt;/Name&gt;     &lt;Description&gt;Men's t-shirt. Jersey 100% cotton: 150 g/m². 1x1 r     &lt;HasColors&gt;true&lt;/HasColors&gt;     &lt;IsTextil&gt;true&lt;/IsTextil&gt;     &lt;HasSizes&gt;true&lt;/HasSizes&gt;     &lt;HasCapacities&gt;false&lt;/HasCapacities&gt;     &lt;CombinedSizes&gt;Sizes: XS, S, M, L, XL, XXL&lt;/CombinedSizes&gt;     &lt;Gender&gt;Male&lt;/Gender&gt;     &lt;BoxLengthMM&gt;560&lt;/BoxLengthMM&gt;     &lt;BoxWidthMM&gt;370&lt;/BoxWidthMM&gt;     &lt;BoxHeightMM&gt;300&lt;/BoxHeightMM&gt;</pre>	<pre>"Products": [   {     "ProdReference": "30101",     "Name": "LUANDA Men's t-shirt",     "Description": "Men's t-shirt. Jersey 100% cotton: 150 g/m². 1x1 rib collar w     "HasColors": true,     "IsTextil": true,     "HasSizes": true,     "HasCapacities": false,     "CombinedSizes": "Sizes: XS, S, M, L, XL, XXL",     "Gender": "Male",     "BoxLengthMM": 560,     "BoxWidthMM": 370,     "BoxHeightMM": 300,     "BoxWeightKG": 0.165,</pre>

## 1.2 REST (part 2)

Replace **ACCESS\_KEY** with your access key.

Method	Url with parameters
AuthorizeClient	<a href="http://ws.stricker-europe.com/api/v1/authenticateclient?AccessKey=ACCESS_KEY">http://ws.stricker-europe.com/api/v1/authenticateclient?AccessKey=ACCESS_KEY</a>
ValidateSession	<a href="http://ws.stricker-europe.com/api/v1/validateSession?token={session_token}">http://ws.stricker-europe.com/api/v1/validateSession?token={session_token}</a>
ProductsTree	<a href="http://ws.stricker-europe.com/api/v1/productsTree?token={session_token}&amp;lang={language}">http://ws.stricker-europe.com/api/v1/productsTree?token={session_token}&amp;lang={language}</a>
Products	<a href="http://ws.stricker-europe.com/api/v1/products?token={session_token}&amp;lang={language}">http://ws.stricker-europe.com/api/v1/products?token={session_token}&amp;lang={language}</a>
Optionals	<a href="http://ws.stricker-europe.com/api/v1/optionals?token={session_token}&amp;lang={language}">http://ws.stricker-europe.com/api/v1/optionals?token={session_token}&amp;lang={language}</a>
OptionalsComplete	<a href="http://ws.stricker-europe.com/api/v1/optionalscomplete?token={session_token}&amp;lang={language}">http://ws.stricker-europe.com/api/v1/optionalscomplete?token={session_token}&amp;lang={language}</a>
CustomizationOptions	<a href="http://ws.stricker-europe.com/api/v1/customizationOptions?token={session_token}&amp;lang={language}">http://ws.stricker-europe.com/api/v1/customizationOptions?token={session_token}&amp;lang={language}</a>
CustomizationTables	<a href="http://ws.stricker-europe.com/api/v1/customizationTables?token={session_token}&amp;lang={language}">http://ws.stricker-europe.com/api/v1/customizationTables?token={session_token}&amp;lang={language}</a>
Stocks	<a href="http://ws.stricker-europe.com/api/v1/stocks?token={session_token}&amp;lang={language}">http://ws.stricker-europe.com/api/v1/stocks?token={session_token}&amp;lang={language}</a>
OptionalsPrice	<a href="http://ws.stricker-europe.com/api/v1/optionalsPrice?token={session_token}&amp;lang={language}">http://ws.stricker-europe.com/api/v1/optionalsPrice?token={session_token}&amp;lang={language}</a>
ProductTypes	<a href="http://ws.stricker-europe.com/api/v1/productTypes?token={session_token}&amp;lang={language}">http://ws.stricker-europe.com/api/v1/productTypes?token={session_token}&amp;lang={language}</a>
Colors	<a href="http://ws.stricker-europe.com/api/v1/colors?token={session_token}&amp;lang={language}">http://ws.stricker-europe.com/api/v1/colors?token={session_token}&amp;lang={language}</a>
Orders	<a href="http://ws.stricker-europe.com/api/v1/orders?token={session_token}">http://ws.stricker-europe.com/api/v1/orders?token={session_token}</a>
StocksByCountry	<a href="http://ws.stricker-europe.com/api/v1/StocksByCountry?token={session_token}&amp;country{country}&amp;lang={language}">http://ws.stricker-europe.com/api/v1/StocksByCountry?token={session_token}&amp;country{country}&amp;lang={language}</a>
CloseSession	<a href="http://ws.stricker-europe.com/api/v1/closeSession?token={session_token}">http://ws.stricker-europe.com/api/v1/closeSession?token={session_token}</a>

## 1.3 Direct download - XML

Replace **ACCESS\_KEY** with your access key. Replace **EN** with your language.

Methods	Address
ProductsTree	<a href="http://ws.stricker-europe.com/downloads/v1/file?AccessKey=ACCESS_KEY&amp;data=productsTree&amp;lang=EN&amp;extension=xml">http://ws.stricker-europe.com/downloads/v1/file?AccessKey=ACCESS_KEY&amp;data=productsTree&amp;lang=EN&amp;extension=xml</a>
Products	<a href="http://ws.stricker-europe.com/downloads/v1/file?AccessKey=ACCESS_KEY&amp;data=products&amp;lang=EN&amp;extension=xml">http://ws.stricker-europe.com/downloads/v1/file?AccessKey=ACCESS_KEY&amp;data=products&amp;lang=EN&amp;extension=xml</a>
Optionals	<a href="http://ws.stricker-europe.com/downloads/v1/file?AccessKey=ACCESS_KEY&amp;data=optionals&amp;lang=EN&amp;extension=xml">http://ws.stricker-europe.com/downloads/v1/file?AccessKey=ACCESS_KEY&amp;data=optionals&amp;lang=EN&amp;extension=xml</a>
Optionals Price	<a href="http://ws.stricker-europe.com/downloads/v1/file?AccessKey=ACCESS_KEY&amp;data=optionalsPrice&amp;lang=EN&amp;extension=xml">http://ws.stricker-europe.com/downloads/v1/file?AccessKey=ACCESS_KEY&amp;data=optionalsPrice&amp;lang=EN&amp;extension=xml</a>
Optionals complete	<a href="http://ws.stricker-europe.com/downloads/v1/file?AccessKey=ACCESS_KEY&amp;data=optionalscomplete&amp;lang=EN&amp;extension=xml">http://ws.stricker-europe.com/downloads/v1/file?AccessKey=ACCESS_KEY&amp;data=optionalscomplete&amp;lang=EN&amp;extension=xml</a>
Customization options	<a href="http://ws.stricker-europe.com/downloads/v1/file?AccessKey=ACCESS_KEY&amp;data=customizationOptions&amp;lang=EN&amp;extension=xml">http://ws.stricker-europe.com/downloads/v1/file?AccessKey=ACCESS_KEY&amp;data=customizationOptions&amp;lang=EN&amp;extension=xml</a>
Customization tables	<a href="http://ws.stricker-europe.com/downloads/v1/file?AccessKey=ACCESS_KEY&amp;data=customizationTables&amp;lang=EN&amp;extension=xml">http://ws.stricker-europe.com/downloads/v1/file?AccessKey=ACCESS_KEY&amp;data=customizationTables&amp;lang=EN&amp;extension=xml</a>
Colors	<a href="http://ws.stricker-europe.com/downloads/v1/file?AccessKey=ACCESS_KEY&amp;data=colors&amp;lang=EN&amp;extension=xml">http://ws.stricker-europe.com/downloads/v1/file?AccessKey=ACCESS_KEY&amp;data=colors&amp;lang=EN&amp;extension=xml</a>
Stocks	<a href="http://ws.stricker-europe.com/downloads/v1/file?AccessKey=ACCESS_KEY&amp;data=stocks&amp;lang=EN&amp;extension=xml">http://ws.stricker-europe.com/downloads/v1/file?AccessKey=ACCESS_KEY&amp;data=stocks&amp;lang=EN&amp;extension=xml</a>
Stocks PT	<a href="http://ws.stricker-europe.com/downloads/v1/file?AccessKey=ACCESS_KEY&amp;data=stocksPt&amp;lang=EN&amp;extension=xml">http://ws.stricker-europe.com/downloads/v1/file?AccessKey=ACCESS_KEY&amp;data=stocksPt&amp;lang=EN&amp;extension=xml</a>
Stocks CZ	<a href="http://ws.stricker-europe.com/downloads/v1/file?AccessKey=ACCESS_KEY&amp;data=stocksCz&amp;lang=EN&amp;extension=xml">http://ws.stricker-europe.com/downloads/v1/file?AccessKey=ACCESS_KEY&amp;data=stocksCz&amp;lang=EN&amp;extension=xml</a>
Webservice Orders	<a href="http://ws.stricker-europe.com/downloads/v1/file?AccessKey=ACCESS_KEY&amp;data=orders&amp;lang=EN&amp;extension=xml">http://ws.stricker-europe.com/downloads/v1/file?AccessKey=ACCESS_KEY&amp;data=orders&amp;lang=EN&amp;extension=xml</a>
Product Types and Sub types	<a href="http://ws.stricker-europe.com/downloads/v1/file?ACCESSKEY=ACCESS_KEY&amp;data=producttypes&amp;lang=EN&amp;extension=xml">http://ws.stricker-europe.com/downloads/v1/file?ACCESSKEY=ACCESS_KEY&amp;data=producttypes&amp;lang=EN&amp;extension=xml</a>

## 1.4 Direct download - JSON

Replace **ACCESS\_KEY** with your access key. Replace **EN** with your language.

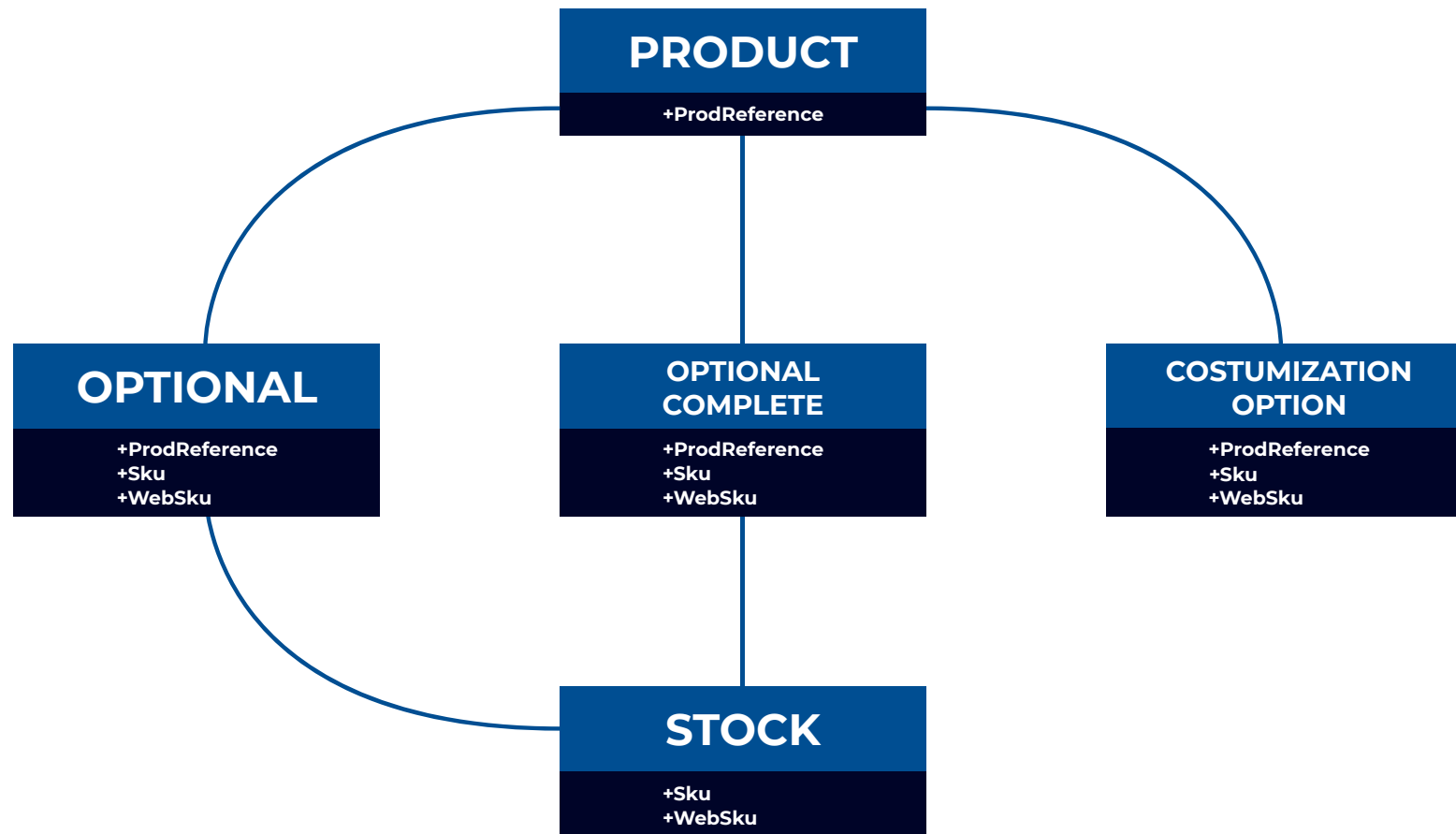
Methods	Address
ProductsTree	<a href="http://ws.stricker-europe.com/downloads/v1/file?AccessKey=ACCESS_KEY&amp;data=productsTree&amp;lang=EN&amp;extension=json">http://ws.stricker-europe.com/downloads/v1/file?AccessKey=ACCESS_KEY&amp;data=productsTree&amp;lang=EN&amp;extension=json</a>
Products	<a href="http://ws.stricker-europe.com/downloads/v1/file?AccessKey=ACCESS_KEY&amp;data=products&amp;lang=EN&amp;extension=json">http://ws.stricker-europe.com/downloads/v1/file?AccessKey=ACCESS_KEY&amp;data=products&amp;lang=EN&amp;extension=json</a>
Optionals	<a href="http://ws.stricker-europe.com/downloads/v1/file?AccessKey=ACCESS_KEY&amp;data=optionals&amp;lang=EN&amp;extension=json">http://ws.stricker-europe.com/downloads/v1/file?AccessKey=ACCESS_KEY&amp;data=optionals&amp;lang=EN&amp;extension=json</a>
Optionals Price	<a href="http://ws.stricker-europe.com/downloads/v1/file?AccessKey=ACCESS_KEY&amp;data=optionalsPrice&amp;lang=EN&amp;extension=json">http://ws.stricker-europe.com/downloads/v1/file?AccessKey=ACCESS_KEY&amp;data=optionalsPrice&amp;lang=EN&amp;extension=json</a>
Optionals complete	<a href="http://ws.stricker-europe.com/downloads/v1/file?AccessKey=ACCESS_KEY&amp;data=optionalscomplete&amp;lang=EN&amp;extension=json">http://ws.stricker-europe.com/downloads/v1/file?AccessKey=ACCESS_KEY&amp;data=optionalscomplete&amp;lang=EN&amp;extension=json</a>
Customization options	<a href="http://ws.stricker-europe.com/downloads/v1/file?AccessKey=ACCESS_KEY&amp;data=customizationOptions&amp;lang=EN&amp;extension=json">http://ws.stricker-europe.com/downloads/v1/file?AccessKey=ACCESS_KEY&amp;data=customizationOptions&amp;lang=EN&amp;extension=json</a>
Customization tables	<a href="http://ws.stricker-europe.com/downloads/v1/file?AccessKey=ACCESS_KEY&amp;data=customizationTables&amp;lang=EN&amp;extension=json">http://ws.stricker-europe.com/downloads/v1/file?AccessKey=ACCESS_KEY&amp;data=customizationTables&amp;lang=EN&amp;extension=json</a>
Colors	<a href="http://ws.stricker-europe.com/downloads/v1/file?AccessKey=ACCESS_KEY&amp;data=colors&amp;lang=EN&amp;extension=json">http://ws.stricker-europe.com/downloads/v1/file?AccessKey=ACCESS_KEY&amp;data=colors&amp;lang=EN&amp;extension=json</a>
Stocks	<a href="http://ws.stricker-europe.com/downloads/v1/file?AccessKey=ACCESS_KEY&amp;data=stocks&amp;lang=EN&amp;extension=json">http://ws.stricker-europe.com/downloads/v1/file?AccessKey=ACCESS_KEY&amp;data=stocks&amp;lang=EN&amp;extension=json</a>
Stocks PT	<a href="http://ws.stricker-europe.com/downloads/v1/file?AccessKey=ACCESS_KEY&amp;data=stocksPt&amp;lang=EN&amp;extension=json">http://ws.stricker-europe.com/downloads/v1/file?AccessKey=ACCESS_KEY&amp;data=stocksPt&amp;lang=EN&amp;extension=json</a>
Stocks CZ	<a href="http://ws.stricker-europe.com/downloads/v1/file?AccessKey=ACCESS_KEY&amp;data=stocksCz&amp;lang=EN&amp;extension=json">http://ws.stricker-europe.com/downloads/v1/file?AccessKey=ACCESS_KEY&amp;data=stocksCz&amp;lang=EN&amp;extension=json</a>
Webservice Orders	<a href="http://ws.stricker-europe.com/downloads/v1/file?AccessKey=ACCESS_KEY&amp;data=orders&amp;lang=EN&amp;extension=json">http://ws.stricker-europe.com/downloads/v1/file?AccessKey=ACCESS_KEY&amp;data=orders&amp;lang=EN&amp;extension=json</a>
Product Types and Sub types	<a href="http://ws.stricker-europe.com/downloads/v1/file?ACCESSKEY=ACCESS_KEY&amp;data=producttypes&amp;lang=EN&amp;extension=json">http://ws.stricker-europe.com/downloads/v1/file?ACCESSKEY=ACCESS_KEY&amp;data=producttypes&amp;lang=EN&amp;extension=json</a>

## 1.5 Direct download - CSV

Replace **ACCESS\_KEY** with your access key. Replace **EN** with your language.

Methods	Address
Products	<a href="http://ws.stricker-europe.com/downloads/v1/file?AccessKey=ACCESS_KEY&amp;data=products&amp;lang=EN&amp;extension=csv">http://ws.stricker-europe.com/downloads/v1/file?AccessKey=ACCESS_KEY&amp;data=products&amp;lang=EN&amp;extension=csv</a>
Optionals	<a href="http://ws.stricker-europe.com/downloads/v1/file?AccessKey=ACCESS_KEY&amp;data=optionals&amp;lang=EN&amp;extension=csv">http://ws.stricker-europe.com/downloads/v1/file?AccessKey=ACCESS_KEY&amp;data=optionals&amp;lang=EN&amp;extension=csv</a>
Optionals Price	<a href="http://ws.stricker-europe.com/downloads/v1/file?AccessKey=ACCESS_KEY&amp;data=optionalsPrice&amp;lang=EN&amp;extension=csv">http://ws.stricker-europe.com/downloads/v1/file?AccessKey=ACCESS_KEY&amp;data=optionalsPrice&amp;lang=EN&amp;extension=csv</a>
Optionals complete	<a href="http://ws.stricker-europe.com/downloads/v1/file?AccessKey=ACCESS_KEY&amp;data=optionalscomplete&amp;lang=EN&amp;extension=csv">http://ws.stricker-europe.com/downloads/v1/file?AccessKey=ACCESS_KEY&amp;data=optionalscomplete&amp;lang=EN&amp;extension=csv</a>
Customization options	<a href="http://ws.stricker-europe.com/downloads/v1/file?AccessKey=ACCESS_KEY&amp;data=customizationOptions&amp;lang=EN&amp;extension=csv">http://ws.stricker-europe.com/downloads/v1/file?AccessKey=ACCESS_KEY&amp;data=customizationOptions&amp;lang=EN&amp;extension=csv</a>
Customization tables	<a href="http://ws.stricker-europe.com/downloads/v1/file?AccessKey=ACCESS_KEY&amp;data=customizationTables&amp;lang=EN&amp;extension=csv">http://ws.stricker-europe.com/downloads/v1/file?AccessKey=ACCESS_KEY&amp;data=customizationTables&amp;lang=EN&amp;extension=csv</a>
Colors	<a href="http://ws.stricker-europe.com/downloads/v1/file?AccessKey=ACCESS_KEY&amp;data=colors&amp;lang=EN&amp;extension=csv">http://ws.stricker-europe.com/downloads/v1/file?AccessKey=ACCESS_KEY&amp;data=colors&amp;lang=EN&amp;extension=csv</a>
Stocks	<a href="http://ws.stricker-europe.com/downloads/v1/file?AccessKey=ACCESS_KEY&amp;data=stocks&amp;lang=EN&amp;extension=csv">http://ws.stricker-europe.com/downloads/v1/file?AccessKey=ACCESS_KEY&amp;data=stocks&amp;lang=EN&amp;extension=csv</a>
Stocks PT	<a href="http://ws.stricker-europe.com/downloads/v1/file?AccessKey=ACCESS_KEY&amp;data=stocksPt&amp;lang=EN&amp;extension=csv">http://ws.stricker-europe.com/downloads/v1/file?AccessKey=ACCESS_KEY&amp;data=stocksPt&amp;lang=EN&amp;extension=csv</a>
Stocks CZ	<a href="http://ws.stricker-europe.com/downloads/v1/file?AccessKey=ACCESS_KEY&amp;data=stocksCz&amp;lang=EN&amp;extension=csv">http://ws.stricker-europe.com/downloads/v1/file?AccessKey=ACCESS_KEY&amp;data=stocksCz&amp;lang=EN&amp;extension=csv</a>
Webservice Orders	<a href="http://ws.stricker-europe.com/downloads/v1/file?AccessKey=ACCESS_KEY&amp;data=orders&amp;lang=EN&amp;extension=csv">http://ws.stricker-europe.com/downloads/v1/file?AccessKey=ACCESS_KEY&amp;data=orders&amp;lang=EN&amp;extension=csv</a>
ProductTree	<a href="http://ws.stricker-europe.com/downloads/v1/file?AccessKey=ACCESS_KEY&amp;data=productsTree&amp;lang=EN&amp;extension=csv">http://ws.stricker-europe.com/downloads/v1/file?AccessKey=ACCESS_KEY&amp;data=productsTree&amp;lang=EN&amp;extension=csv</a>
Product Types and Sub types	<a href="http://ws.stricker-europe.com/downloads/v1/file?ACCESSKEY=ACCESS_KEY&amp;data=producttypes&amp;lang=EN&amp;extension=csv">http://ws.stricker-europe.com/downloads/v1/file?ACCESSKEY=ACCESS_KEY&amp;data=producttypes&amp;lang=EN&amp;extension=csv</a>

## 1.6 Identity relationship diagram



## 2 HOW TO GET YOUR PRICE

You may find price in two formats.

One by quantity and the other one is set if there is a special price.

### STANDARD PRICE

1	x
25	xx
50	xxx
100	xxxx

### SPECIAL PRICE (Property: Your Price)

y

### 3 HOW TO GET YOUR PRINTING PRICE

#### MANUAL



**Product Price**

**Table Code Option**  
Printing price table option

**Handling**



**(Product Price + Handling +  
Printing Price) x Quantity**

(You need to get product feed and  
relate with customization tables  
and calculate price manually)

#### AUTOMATIC



**List of  
all product  
printing  
options**



**Final price  
calculated  
by quantity**



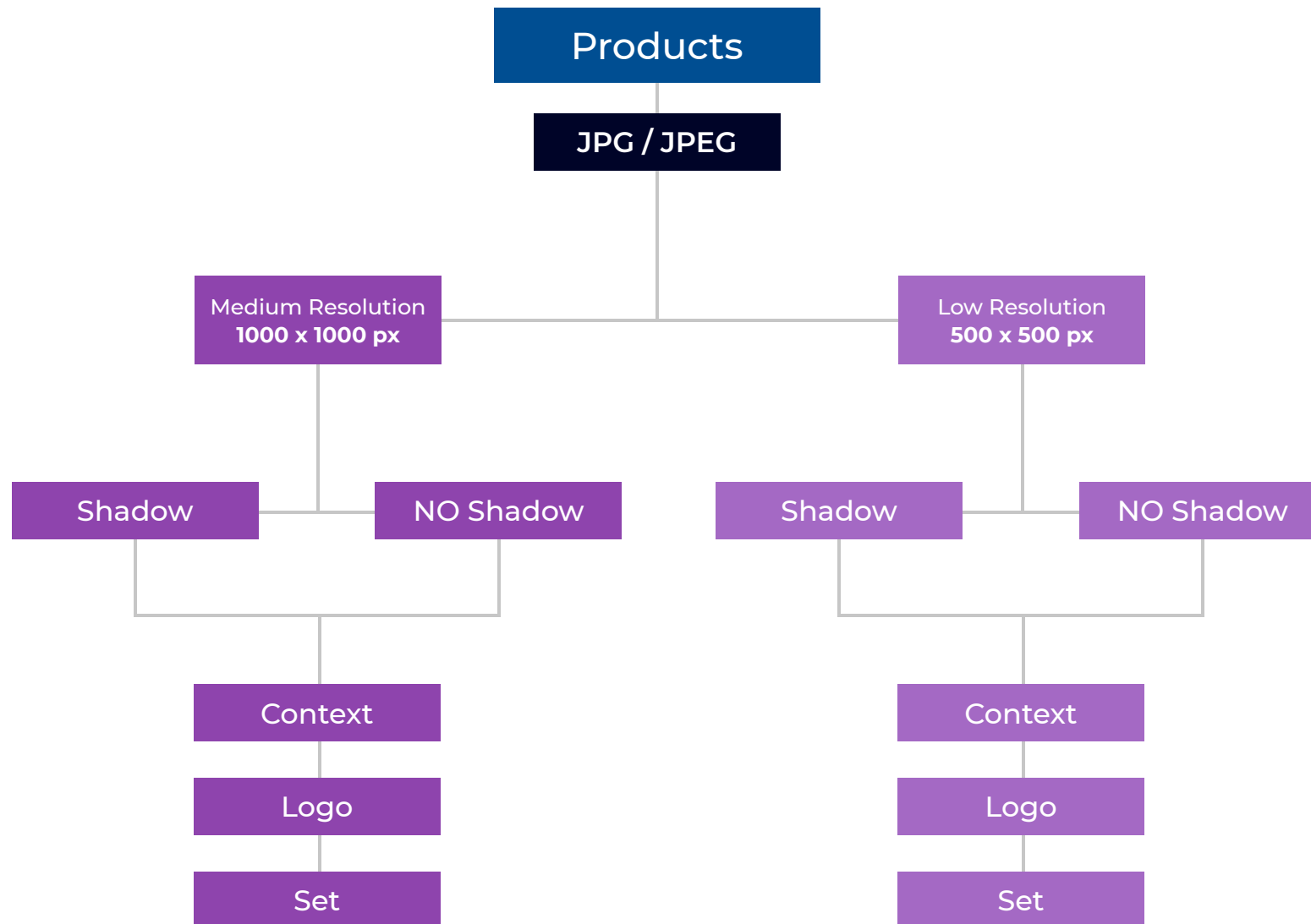
## 4 HOW TO GET IMAGES

Please use the provided urls to download the images,  
replace **ACCESS\_KEY** with your access key.

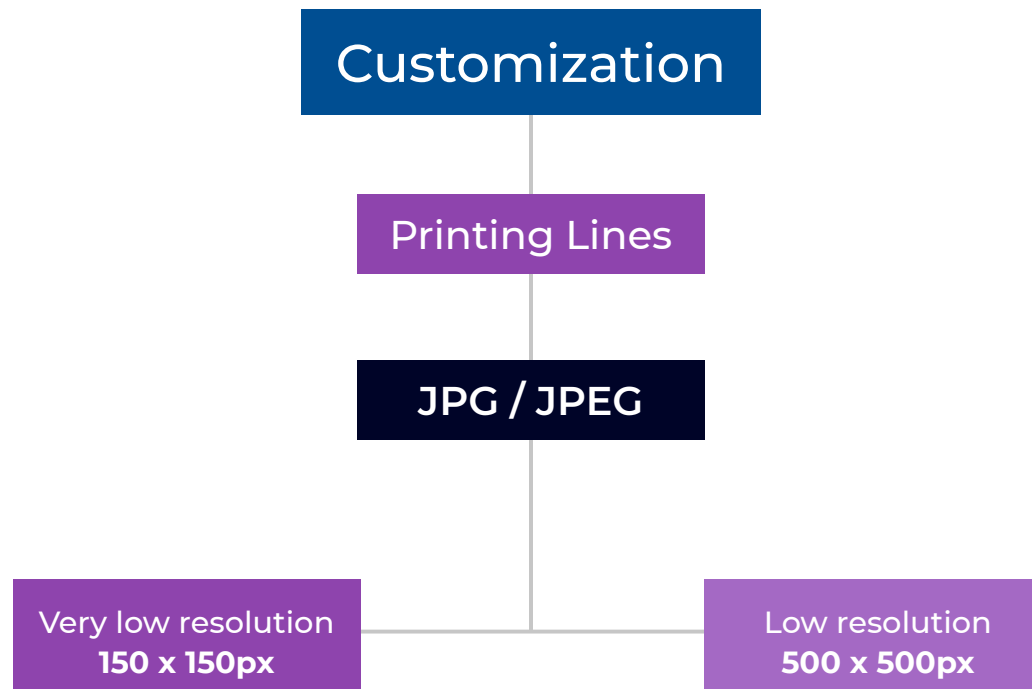
<b>Product images</b> <b>480 x 480</b>	All images available of our products in <b>low resolution</b>	<a href="https://www.stricker-europe.com/en/webservice/downloads.php?accesskey=ACCESS_KEY&amp;datatype=products">https://www.stricker-europe.com/en/webservice/downloads.php?accesskey=ACCESS_KEY&amp;datatype=products</a>
<b>Product images</b> <b>1000 x 1000</b>	All images available of our products in <b>medium resolution</b>	<a href="https://www.stricker-europe.com/en/webservice/downloads.php?accesskey=ACCESS_KEY&amp;datatype=products600">https://www.stricker-europe.com/en/webservice/downloads.php?accesskey=ACCESS_KEY&amp;datatype=products600</a>
<b>Printing lines</b> <b>190 x 190</b>	All images available of our products with personalization area highlighted in <b>low resolution</b>	<a href="https://www.stricker-europe.com/en/webservice/downloads.php?accesskey=ACCESS_KEY&amp;datatype=printinglines">https://www.stricker-europe.com/en/webservice/downloads.php?accesskey=ACCESS_KEY&amp;datatype=printinglines</a>
<b>Printing lines</b> <b>500 x 500</b>	All images available of our products with personalization area highlighted in <b>medium resolution</b>	<a href="https://www.stricker-europe.com/en/webservice/downloads.php?accesskey=ACCESS_KEY&amp;datatype=printinglines500">https://www.stricker-europe.com/en/webservice/downloads.php?accesskey=ACCESS_KEY&amp;datatype=printinglines500</a>

Please note: the images in High Resolution are available in our website, in session Downloads.

## 4.2 HOW TO GET IMAGES - Product Images



## 4.3 HOW TO GET IMAGES - Customization Images



## 4.4 HOW TO GET IMAGES - Cloud Access

Use Stricker Cloud to find High Resolution images, and more resources from our social media communication.



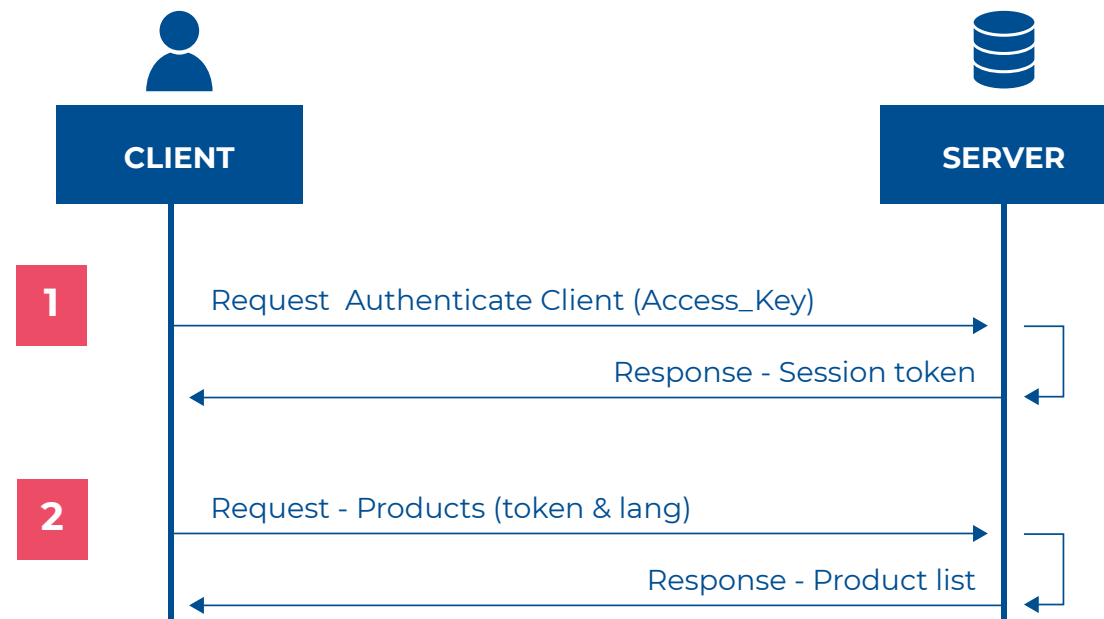
**Link:**

**Password:**

## 5 AUTHENTICATION (part 1)

To access services client must be authenticated in the system, this is possible using the provided web service access key. Client must request authorization. If client is allowed, a session token will be generated, otherwise there will be an error message. All requests except authentication require the session token as a parameter.

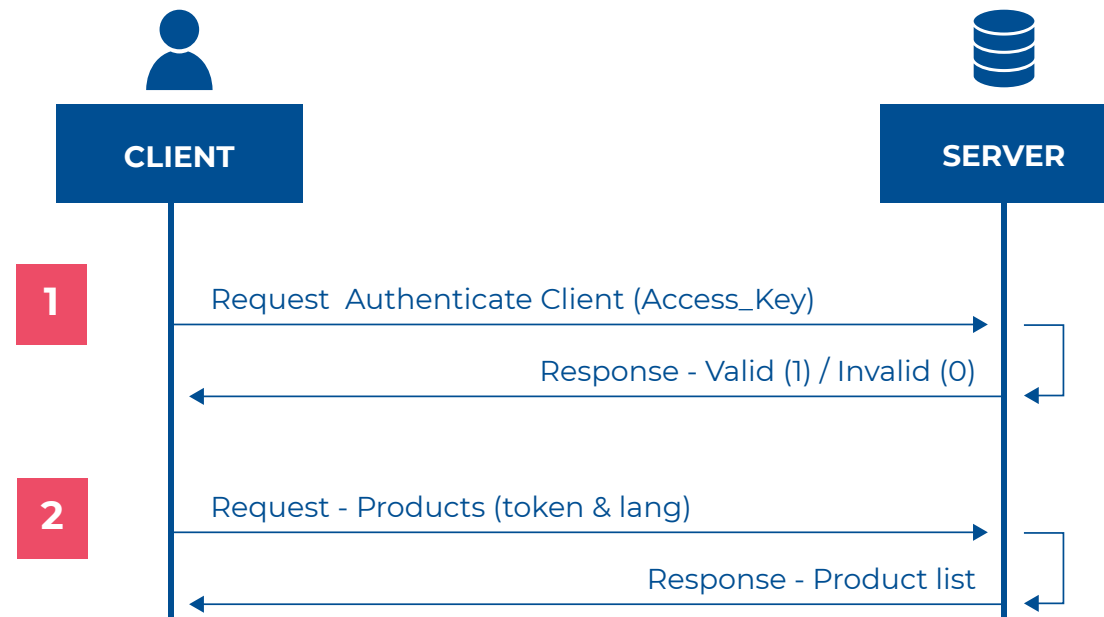
### Authentication scenario 1 (no previous session token stored, or session token invalid)



1. Request "**AuthenticateClient**" with access key, if allowed, response session token.
2. Request "**Products**" with session token and language as parameter.  
Store session token in a variable, the session token can be valid up to 24 hours.

## 5 AUTHENTICATION (part 2)

### Authentication scenario 2 (already authenticated, session token stored)



1. Request "**ValidateSession**" with the previous stored session token, if the token is invalid, go back to "**Authenticate scenario 1**", if token is valid, there is no need to authenticate again.
2. Request "**Products**" with token and language as parameter.

## 6 ERROR MANAGEMENT

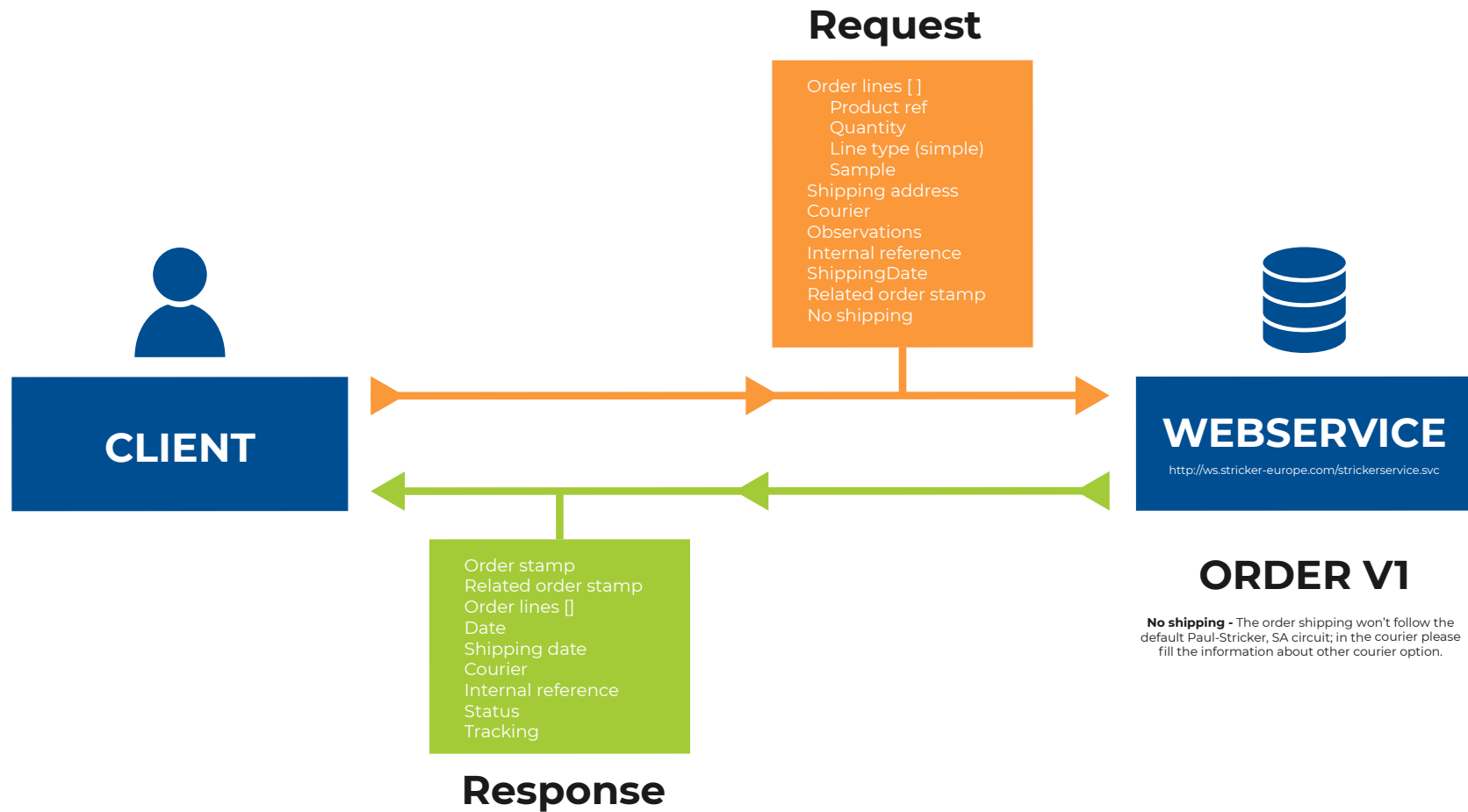
All response data structures have the following properties with information regarding the request status, this information is empty, unless there was an error with the request.

Property name	Type
ErrorCode	bool
ErrorMessage	string

In the following table you will find the list of custom error codes and its meaning:

Code	Meaning
1	Forbidden (the access key is invalid)
w2	There was a problem with your request (internal error occurred. This situation will be reported to our developers and they will fix as soon as possible. Please try again later.)
10	Access key required (missing access key in the request)
12	Session token required (missing session token in the request)
13	Invalid session (session expired)
14	Maximum request per day reached
15	There is a problem with your account. Please contact your sales manager

## 7 PRODUCT ORDER

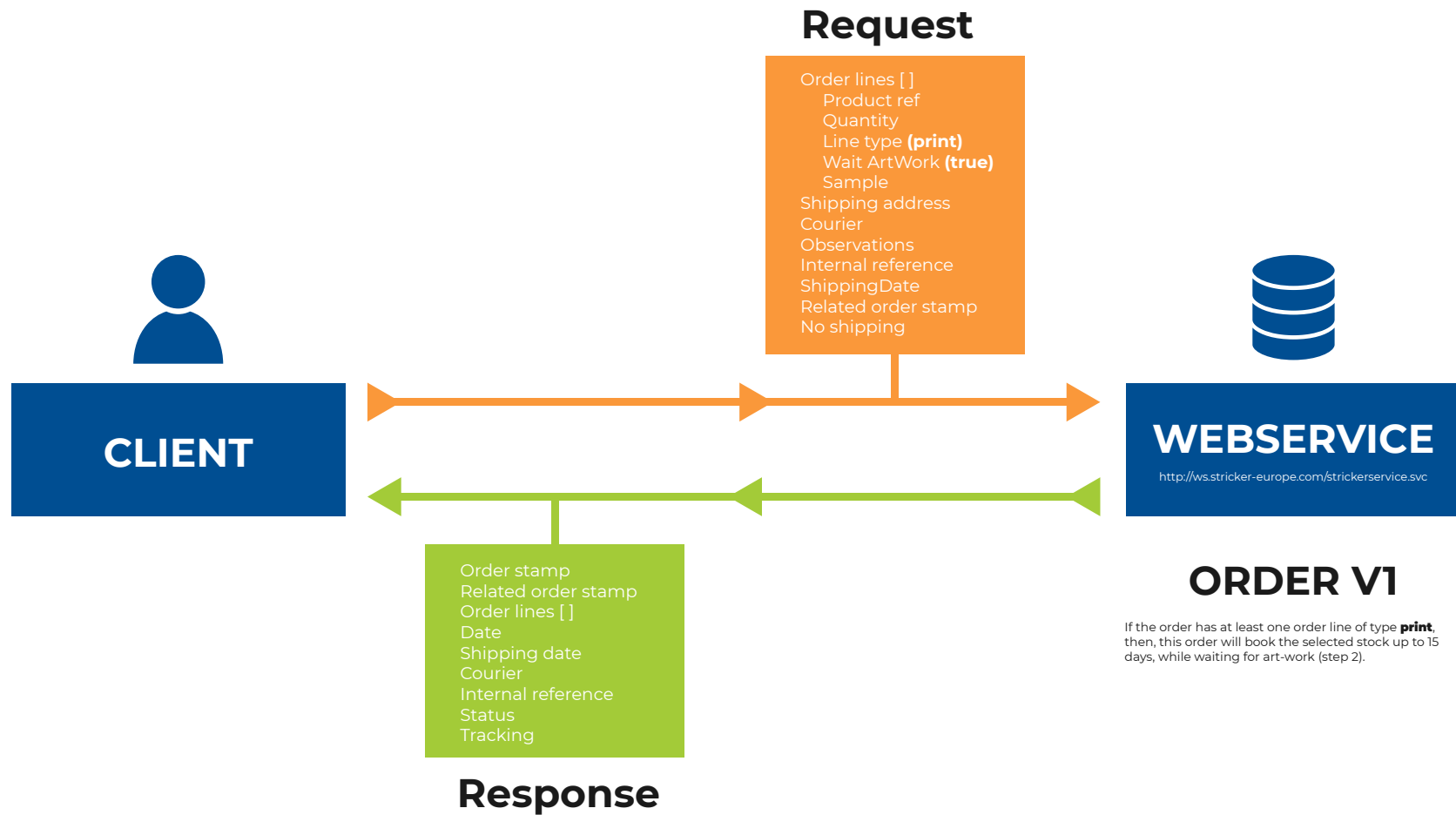


Always keep your **Order stamp** during all the process



## 8 PRODUCT ORDER WITH PRINT

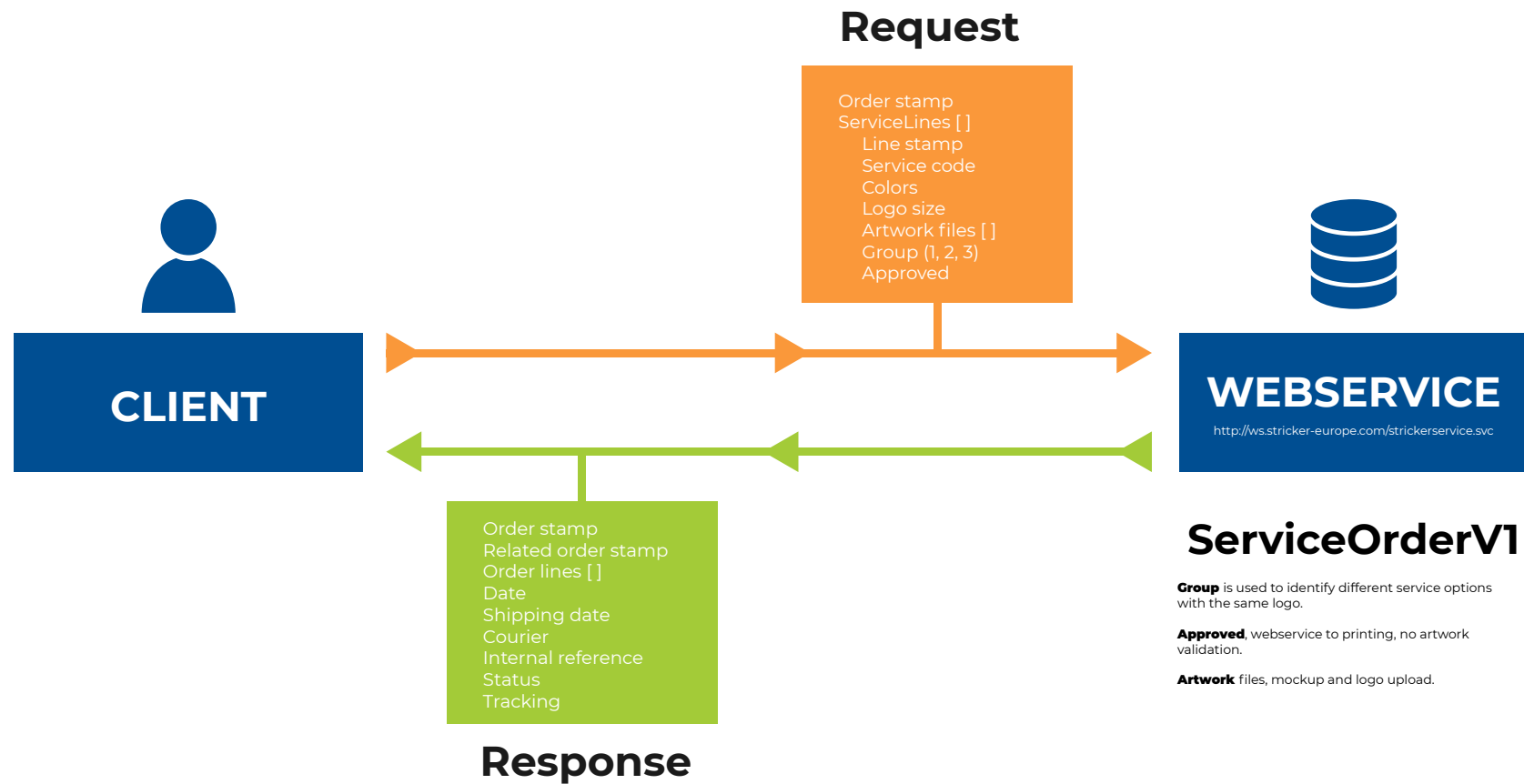
### Printing & artwork information



Always keep your **Order stamp** & **orderlinestamp** during all the process

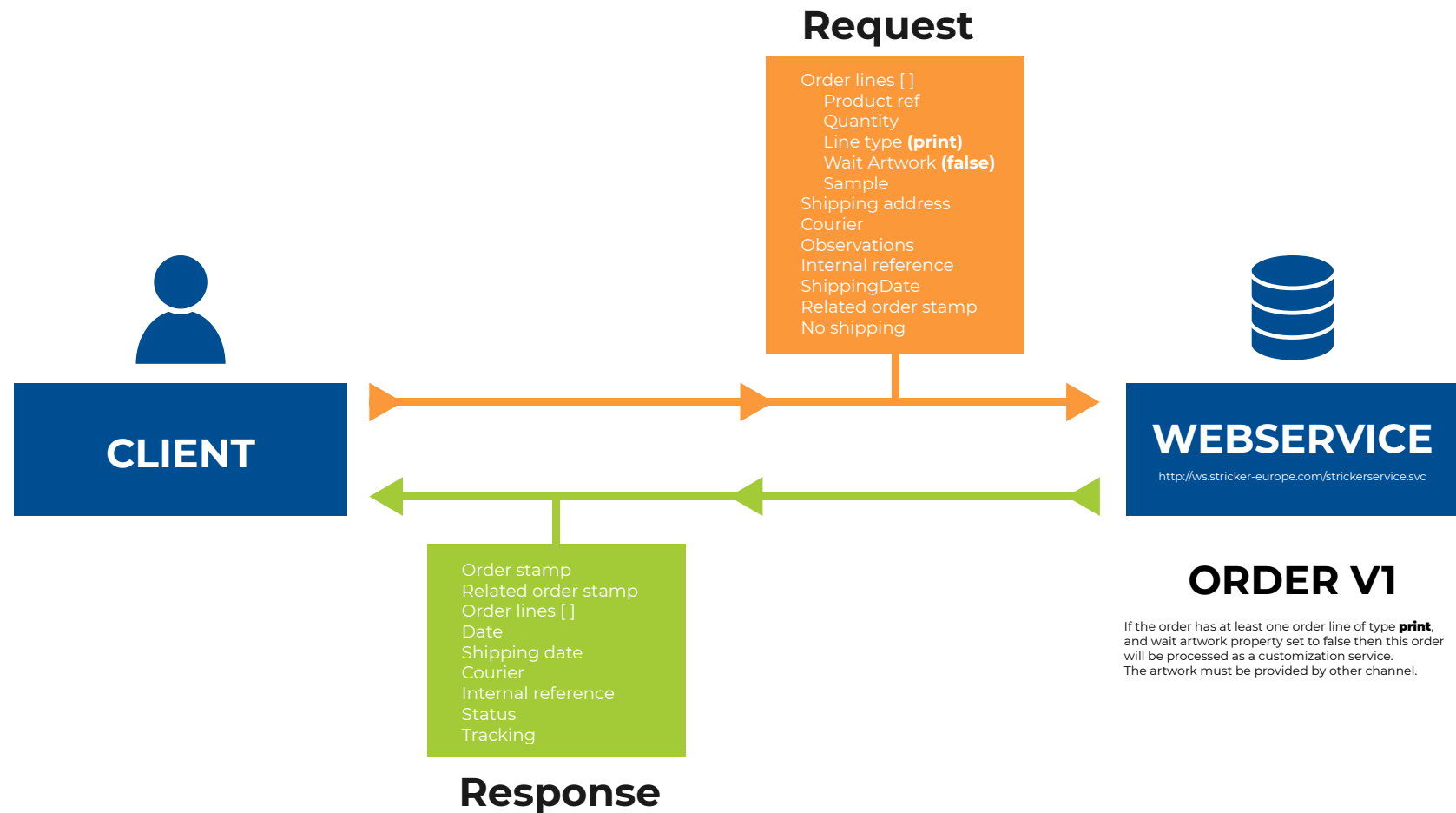
## 8 PRODUCT ORDER WITH PRINT

### Printing & artwork information



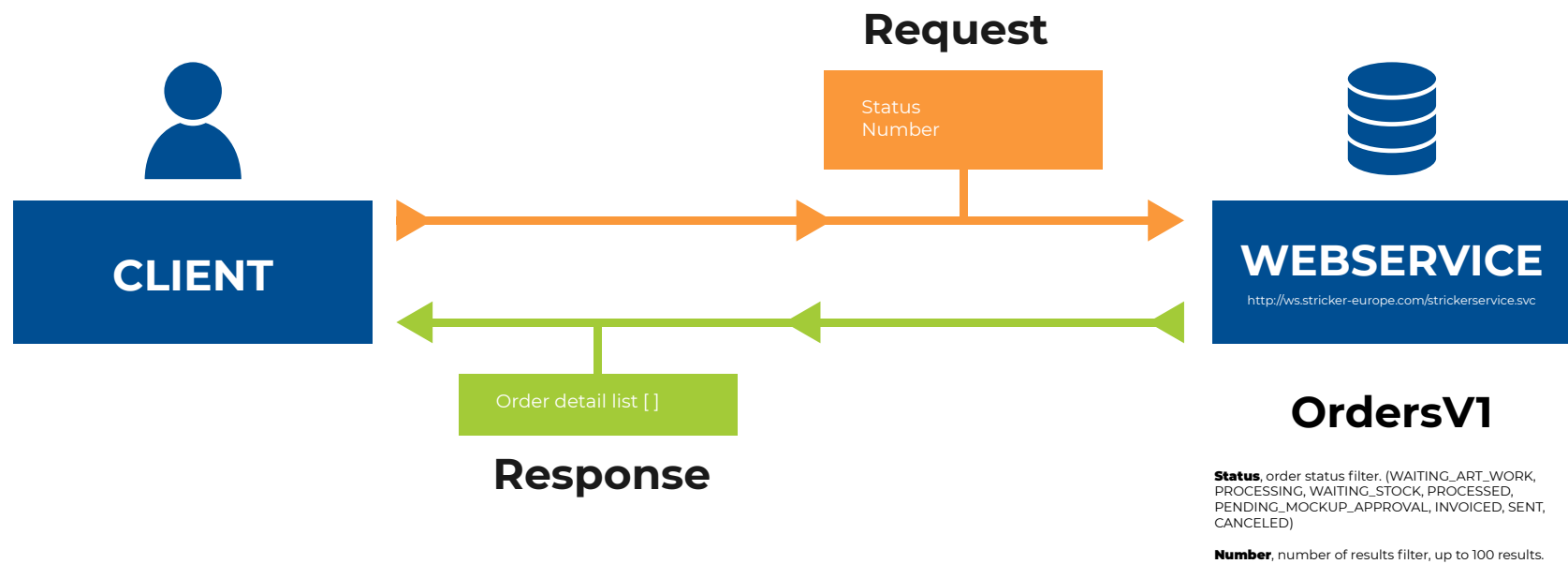
Always keep your **Order stamp** during all the process

## 9 PRODUCT ORDER WITH PRINT (ARTWORK LATER)



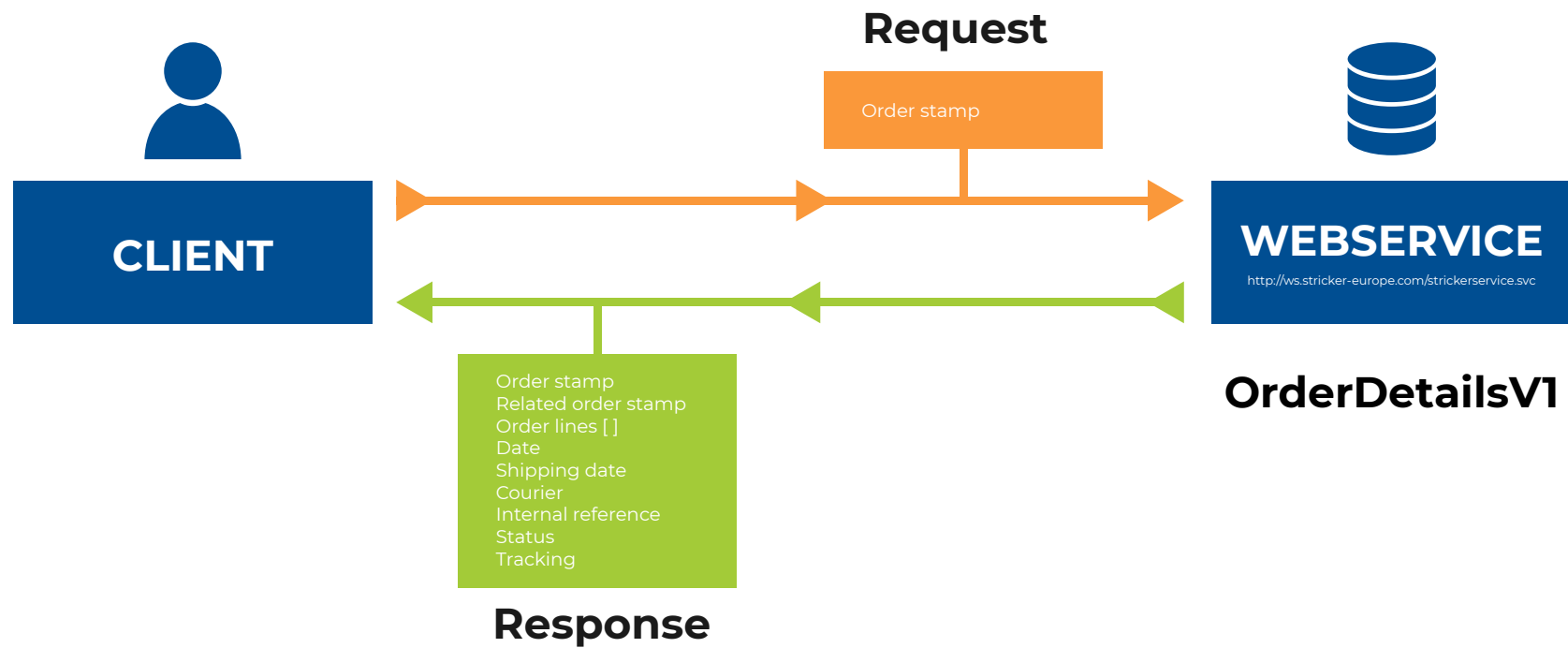
Always keep your **Order stamp** & **orderlinestamp** during all the process

## 10 ORDER LIST



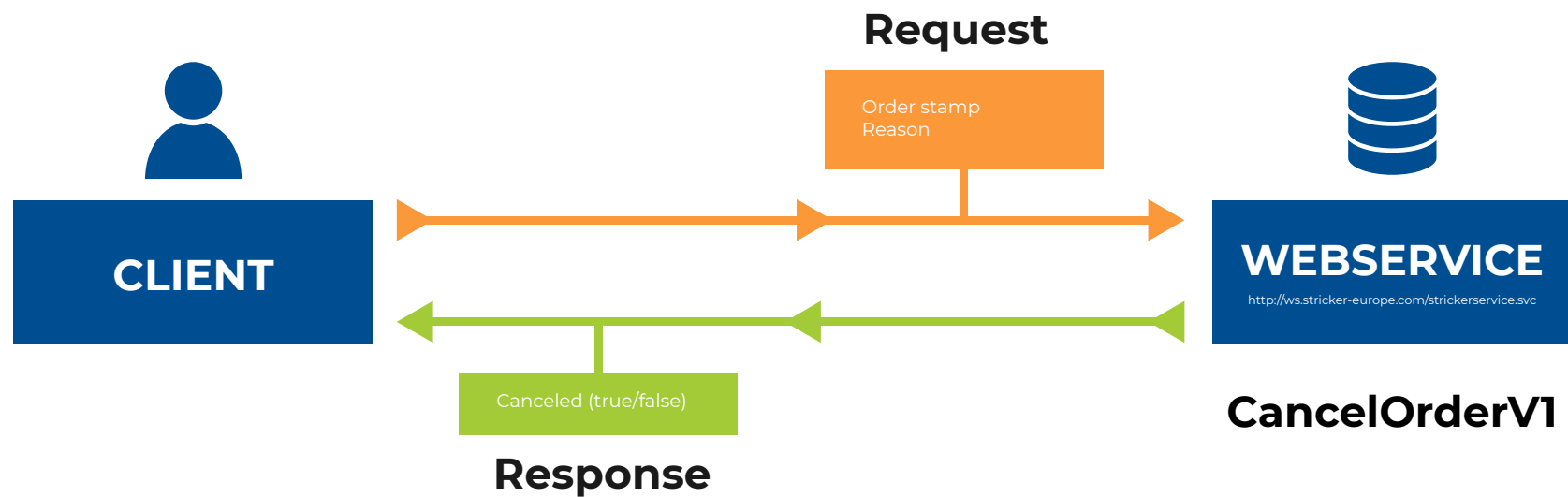
Always keep your **Order stamp** during all the process

## 11 ORDER DETAILS



Always keep your **Order stamp** during all the process

## 12 CANCEL ORDER



Always keep your **Order stamp** during all the process

## image glossary



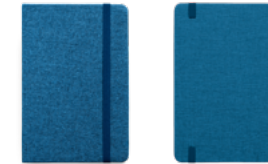
**MainImage**

Set - Image of product with all colors/ components



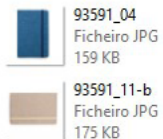
**OptionallImage2**

Optional Image for use on website



**Location1Image**

Location available for the printing option - without printing lines (For customization only)



93591\_04  
Ficheiro JPG  
159 KB



93591\_05  
Ficheiro JPG  
207 KB



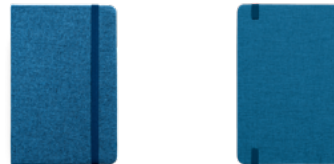
93591\_11-b  
Ficheiro JPG  
175 KB



93591\_13  
Ficheiro JPG  
206 KB

**AllImageList**

All images available



**Component1Image**

Images of each component available for product (For personalization only)



**Area1Image**

Total area available for printing options (For customization only)



**OptionallImage1**

Individual Image of the product



**ComposedLocation1**

Location available for the printing option - with printing lines (For customization only)

## glossary

**Addressline1 - Destinatary of delivery**

**Addressline2 - Address of delivery**

**Artwork** - Artwork files, mockup and logo upload

**Courier** - Economy or express

**Country - ISO of Country**

**CustomizationTypes** - All customization options available for the product

**CustomizationDefaultType** - The recommended customization for the product

**DefaultCustomizationPrintingLines** -

Image with printing option for recommended customization

**HotSpot** - HotSpot1Type, HotSpot1OriginX, HotSpot1OriginY, HotSpot1Top, HotSpot1Left, HotSpot1Width, HotSpot1Height - all shows components of printing coordinates

**Group** - Used to identify different service options with the same logo

**Internal Reference** - Your order unique identifier

**IsStockOut** - Indicate if the product is from Stockout catalogue (with no future stock)

**Line stamp** - Order line unique identifier necessary to artwork submission

**Line type (simple)** - Product order line without printing

**Line type (print)** - Product order line with printing

**No shipping** - The order shipping won't follow the default Paul-Stricker, SA circuit, in the courier please fill the information about other courier option.

**Observations** - Field for any observations to be added

**OnlineExclusive** - Indicate the product is not available on printed catalogue, only on website

**Order stamp** - Order unique identifier

**Service code** - Printing identifier

**Status** - order status filter. (WAITING\_ART\_WORK, PROCESSING, WAITING\_STOCK, PROCESSED, PENDING MOCKUP\_APPROVAL, INVOICED, SENT, CANCELED)

**Tracking** - URL to follow your order

**Wait ArtWork (true)** - Order will wait for artwork submission

**Wait Artwork (false)** - Order will be processed but will wait for artwork sent by another media (email, etc.)

## disclaimer

Prices and Product Specifications are subject to trade discount and to change without notice. Paul Stricker carefully check pricing and product specifications, but occasionally errors can occur, therefore we reserve the right to change both without notice.

Paul Stricker are not responsible for customer pricing errors. Some variations between picture and product may occur. Some products listed may be non-stock items.

We reserve the right to change our product's prices at any time without further notice.

Paul Stricker does not guarantee that hexadecimal codes correspond to the exact color of product.

The hexadecimal code is an indicative color.





 **STRICKER**

**webservice** v2.11

# THANK YOU